



**ALASKA DIVISION OF HOMELAND SECURITY &
EMERGENCY MANAGEMENT**



SITUATION REPORT 22-333 • NOVEMBER 29, 2022

Toll-Free 1.800.478.2337

Anchorage Area 907.428.7000

SEOC 907.428.7100

<p><u>SEOC Preparedness Level</u> Level 1 – Routine Operations</p>	<p>http://ready.alaska.gov</p>	<p><u>National Terrorism Advisory System:</u> Read the NTAS Bulletin here</p>
<p><u>Maritime Security (MARSEC)</u> Level: 1-Minimum Appropriate Security Measures</p>	<p>WHO Novel Coronavirus Pandemic (COVID-19): 2019 Novel Coronavirus</p>	<p><u>Alaska Military Installation Force Protection Level:</u> FPCON Bravo</p>

(Significant changes from previous situation reports are in red.)

Significant Issues:

None.

State of Alaska Department of Health (DOH)

The DOH is leading the State of Alaska COVID-19 Recovery, supported by the SEOC and other state departments as required.

For current COVID-19 information, see:

<https://covid19.alaska.gov/>

<https://www.cdc.gov/coronavirus/2019-ncov/index.html>

NTAS Bulletin

To read current or expired advisories, click the link below:

<https://www.dhs.gov/national-terrorism-advisory-system>

Travel Alerts and Conditions

For current driving conditions dial 511 or link to <https://511.alaska.gov/>

Barry Arm Landslide / Tsunami Risk

For the latest information on the Barry Arm Landslide and Tsunami risk, click here:

[DGGs Barry Arm Landslide and Tsunami Hazard](#)

Recent Earthquakes

USGS Earthquake Information: <http://earthquake.usgs.gov/>

National Tsunami Warning Center: <http://tsunami.gov/>

Alaska Volcanoes

Great Sitkin Alert Level: Watch and Aviation Color Code: **Orange**

Cleveland Alert Level: Advisory and Aviation Color Code: **Yellow**

Pavlof Alert Level: **Watch** and Aviation Color Code: **Orange**
Semisopchnoi Alert Level: **Advisory** and Aviation Color Code: **Yellow**
Takawangah Alert Level: **Advisory** and Aviation Color Code: **Yellow**
For Alaska Volcano updates, go to: <https://www.avo.alaska.edu/>

Air Quality Index (AQI) Advisories

Air Quality Stage 1 Alert issued for Fairbanks Zone through today 2:00PM
Air Quality Stage 2 Alert issued for North Pole Zone through today 2:00PM
For the most up to date Air Quality Index Advisories:

<http://dec.alaska.gov/Applications/Air/airtoolsweb/Home/Index>

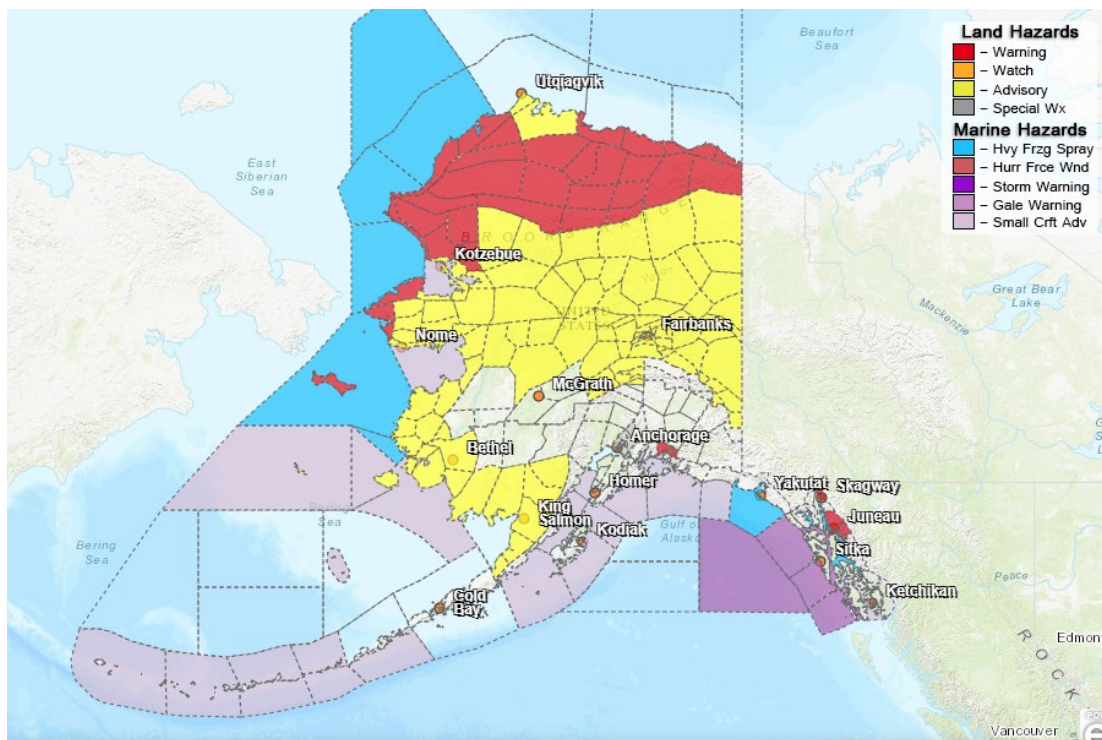
Spills of Oil and Hazardous Substances

The ADEC Spill Prevention and Response page is located at:
<http://dec.alaska.gov/spar/ppr/spill-information/response/>

Alaska Cyber Security Information

State Employees may sign up for cyber security notifications and alerts at
<https://oit.alaska.gov/security>
CISA-Cybersecurity Services and Tools: www.cisa.gov/free-cybersecurity-services-and-tools

Significant Weather:



The following High Wind Warnings have been issued:

- Skagway, Klondike Highway, and Downtown Juneau through 9:00PM this evening. Northeast winds 30 to 40 mph with gusts 60-70 mph expected.
- Valdez and Thompson Pass from 9:00PM this evening through 9:00PM this evening. Northeast winds from 40 to 50 mph with gusts up to 75 mph expected.

The Following Winter Storm Warnings have been issued:

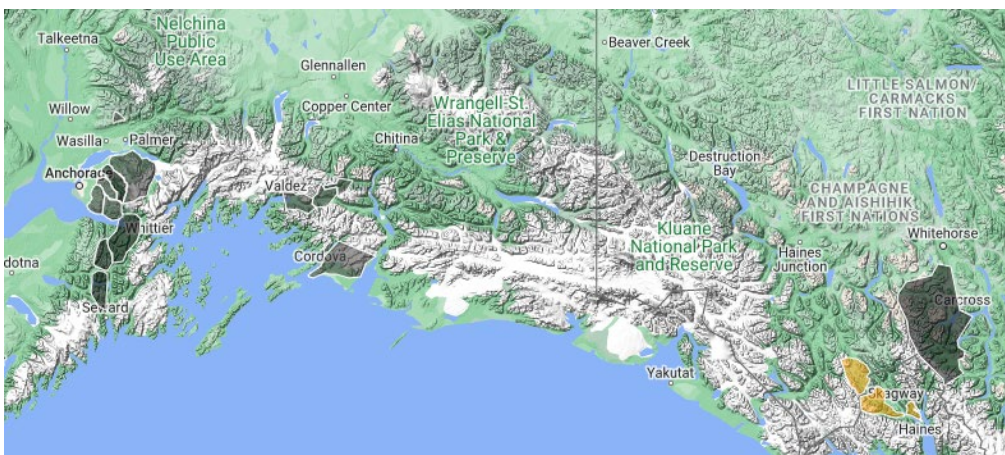
- St. Lawrence Island and Bering Strait Coast until 3:00PM Wednesday. Heavy snow with periods of blizzard conditions and winds gusting up to 50 mph.
- Chukchi Sea Coast from Noon today to 6:00PM Wednesday. Heavy snow with blizzard conditions with up to 8 inches of snow accumulation, 50 mph gusting winds and limited visibility.
- Lower Kobuk and Noatak Valleys from 3:00PM this afternoon to 6:00PM Wednesday. Heavy snow and blowing snow expected with accumulation of 8+ inches and winds up to 40 mph.
- Northwestern and Northeastern Brooks Range from 6:00AM Wednesday to 6:00AM Thursday. Heavy snow and blowing snow expected with accumulation of 8+ inches and winds up to 40 mph.
- Central and Eastern Beaufort Sea Coast from 6:00AM Wednesday to Noon Thursday. Heavy snow expected with accumulation of 5-7 inches.

The following Winter Weather Advisories have been issued:

- Southern Seward Peninsula Coast from 9:00PM this evening to Noon Wednesday. Snow and blowing snow with accumulation of up to 6 inches with limited visibility.
- Yukon Delta from Midnight tonight to 3:00PM Wednesday. Mixed precipitation with snow and ice accumulation expected.
- Baldwin Peninsula and Selawik Valley from 9:00pm this evening to 6:00PM Wednesday. Snow and blowing snow with total accumulation of up to 6 inches and gusts up to 40 mph expected.
- Northern and Interior Seward Peninsula from Midnight tonight to 6:00PM Wednesday. Snow and blowing snow with accumulation up to 6 inches with wind gusts of 30 mph expected.
- Eastern Norton Sound and Nulato Hills from 3:00AM to 6:00PM Wednesday. Snow and blowing snow expected with accumulatio of 7 inches expected with limited visibility and 40 mph winds.
- Upper Kobuk and Noatak Valleys from 3:00AM to 6:00PM Wednesday. Snow and blowing snow expected with accumulatio of 7 inches expected with limited visibility and 40 mph winds.
- Upper and Lower Koyukuk and Middle Yukon Valleys from 6:00AM to 6:00PM Wednesday. Snow expected with accumulation of 4-6 inches expected. Travel and visibility will be difficult.
- Central Interior. Yukon Flats and Surrounding Uplands and the Middle Tanana Valley from 9:00AM Wednesday to 6:00AM Thursday. Snow expected with accumulation of 4-6 inches expected.

For more information and the most current weather, Watches / Warnings / Advisories go to:
<http://www.weather.gov/arh>.

Avalanche Forecast:



Check the Avalanche Forecast Center closest to your area for the most up to date information on avalanche potential. <https://alaskasnow.org> or <https://www.weather.gov/afc/avalancheweather>

The Next Situation Report: will be 30 November 2022. A significant change in the situation or the threat level will prompt an interim report. This report is posted on the internet at <https://ready.alaska.gov/sitrep>.

To register for email distribution, go to <http://list.state.ak.us/mailman/listinfo/dhsem.situation.report>. Direct questions regarding this report to the SEOC at 907-428-7100 or seoc@alaska.gov